

Pelican Bay Catchment Program



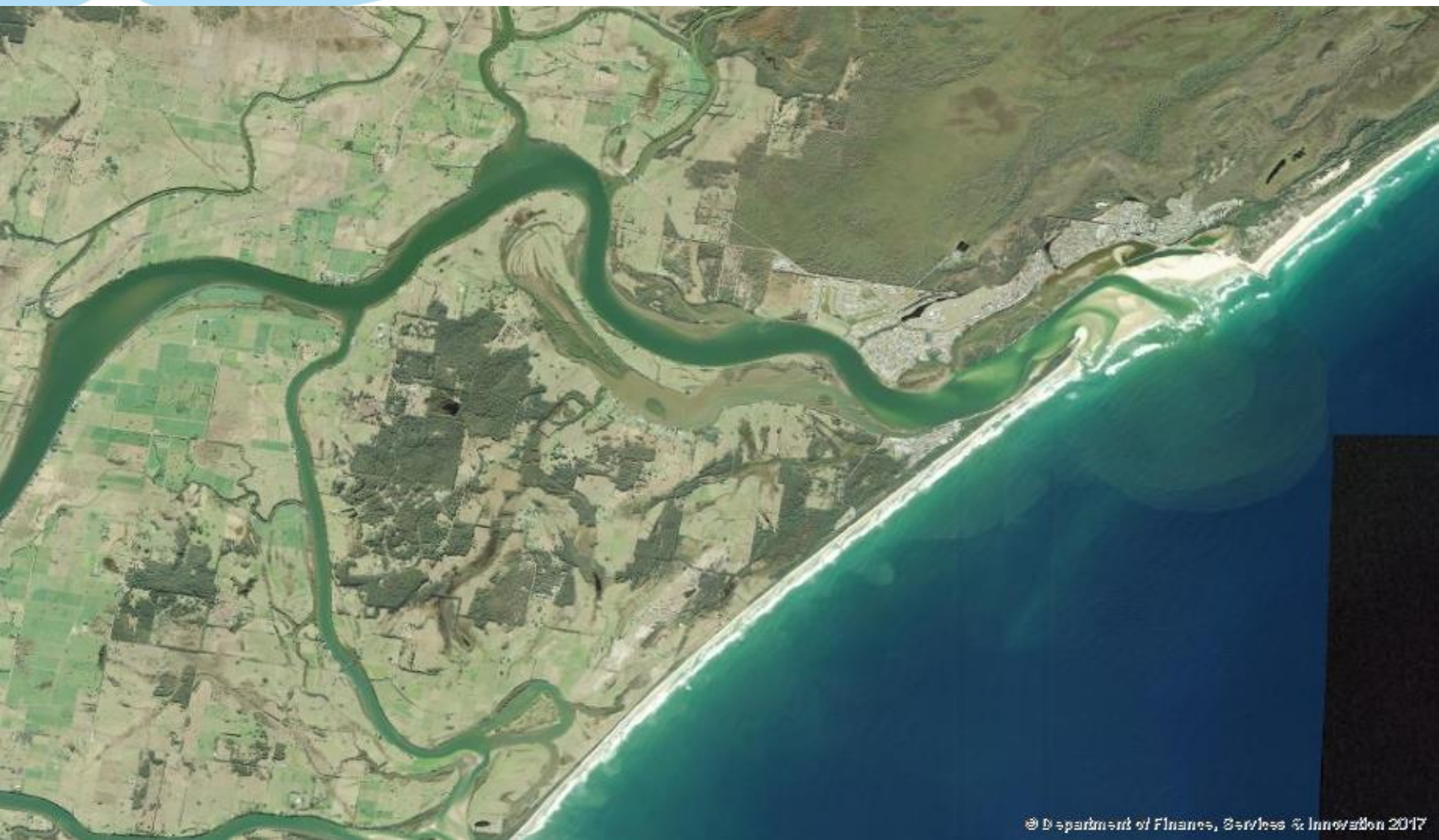
Pelican Bay Catchment Program

- NSW Mid North Coast
- Lower Manning River Estuary
- Mitchells Island

AIM: Improving water quality for oyster production

Thank you

- Nick Bullock
- Ian Crisp, Gus and Chris Ruprecht
- MidCoast Council
- Anthony Zammit and Phil Baker
- Wayne O'Connor
- Landholders
- Crown Lands



© Department of Finance, Services & Innovation 2017



© Department of Finance, Services & Innovation 2017

Where did it start?

- Oyster Transformation Project
- Sensor installed 2017
- March 2018:
 - Meeting re location
 - Direct Harvest?
 - Poor QAP results





“No rhyme or reason”

Where is the pollution
coming from?

Developing a subcatchment program

- Desktop review by Nick Bullock
- Landholder interviews by Nick Bullock and LLS
 - Values
 - Issues
 - History
 - Willingness
- Follow-up issues
 - Meeting
 - Projects



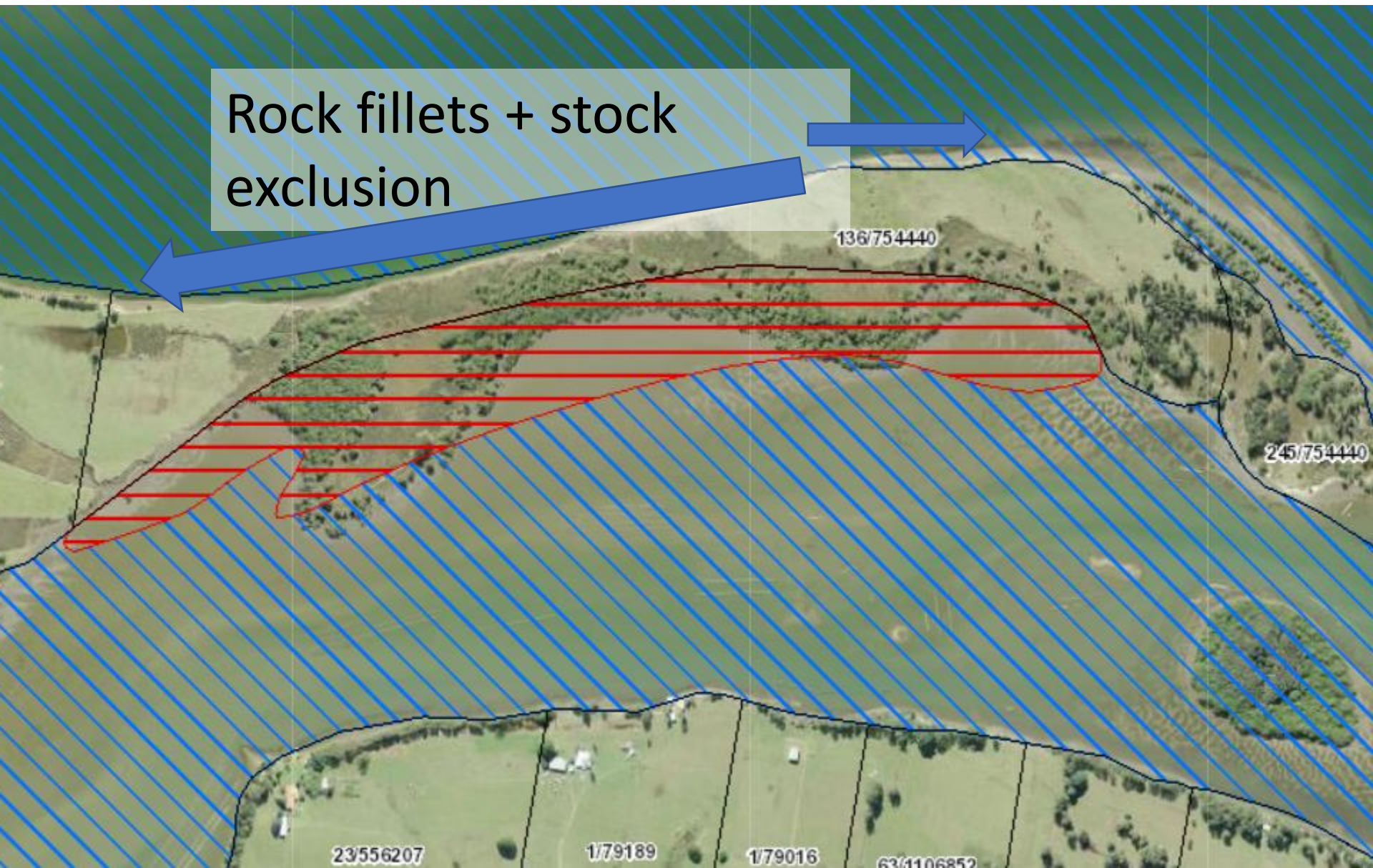
Issues identified

- Willing landholders
- Stock access to bay and estuarine habitats
- On-site sewage management
- Barriers to tidal exchange
- Private land in the tidal zone
- Oyster farming practices

Stock access – public vs private



Crown land with grazing permit - now revoked



Grazing permit revoked but not fenced



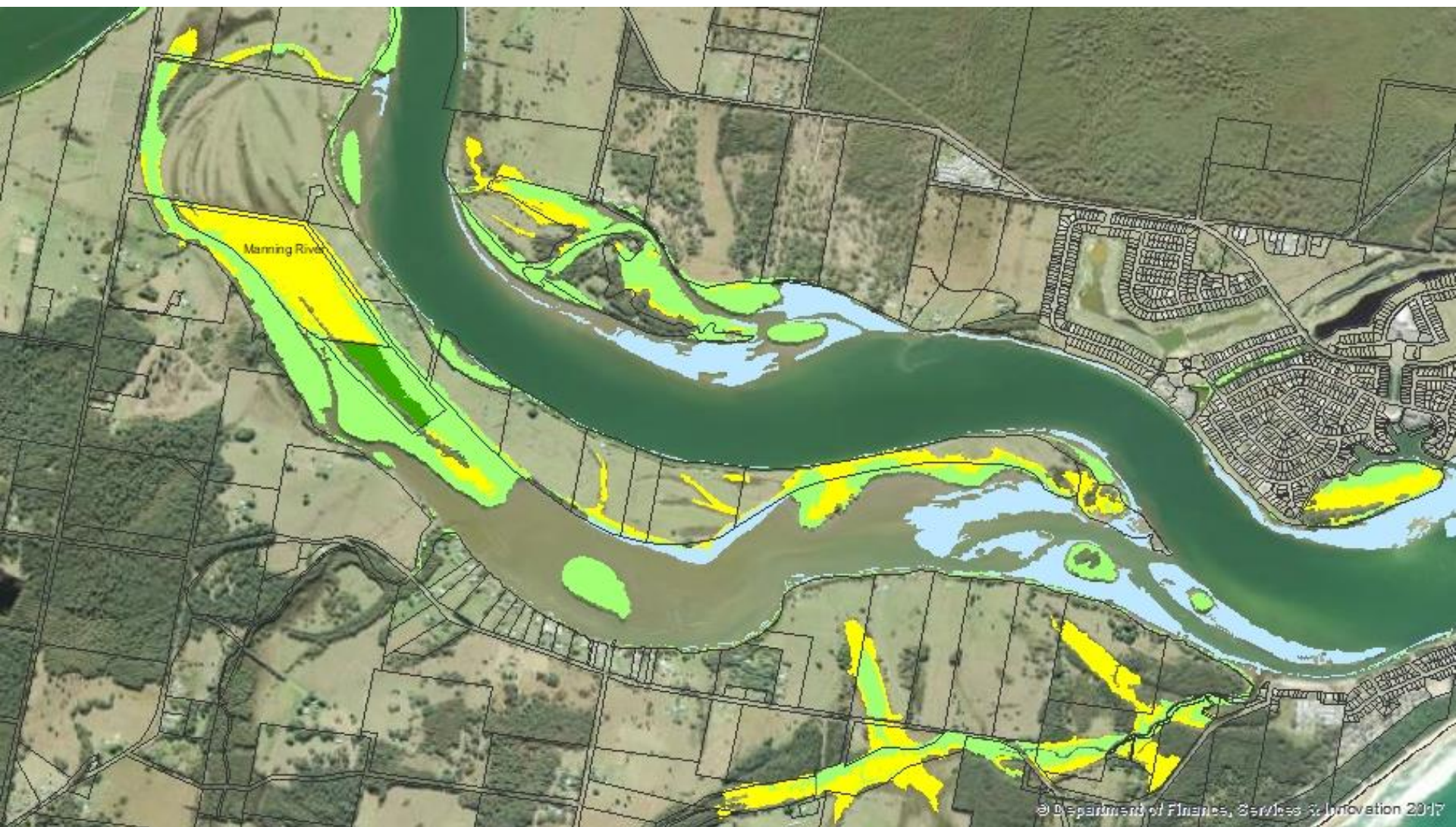
Opportunity 1 (thanks Andy!)

- Review of public land that stock can access
 - Crown land, RMS etc
- Start with priority oyster areas
- Develop process to prevent grazing of mangroves, saltmarsh etc

Private land



Mangroves and saltmarsh on private land



Willing landholders



On-site sewage management

- Lack of a regular inspection program
- Pump to sewer setup slipped between cracks
- Council are rectifying the situation
- Inspecting pump to sewer systems this week

Opportunity 2: Talk to all our Councils to get regular inspections happening

Barriers to tidal exchange



Old floodgate infrastructure



Dying wetlands



Undersized and blocked culvert



Opportunity 3 (Underway)

- Develop program with Council and landholders to upgrade culverts, remove floodgates etc
- Fund projects (Marine Estate) with landholders to prevent stock access
- Acquire private land for conservation

Benefits of Pelican Bay model

- Non-confronting approach with landholders
- No initial timeframe – idea first \$ later
- Places spotlight on issues
- Subcatchment draws on community links
- Collaboration between stakeholders
- Focus on fixing not blaming
- Tilligerry Creek?