



WA Oyster Sector *status and opportunities*

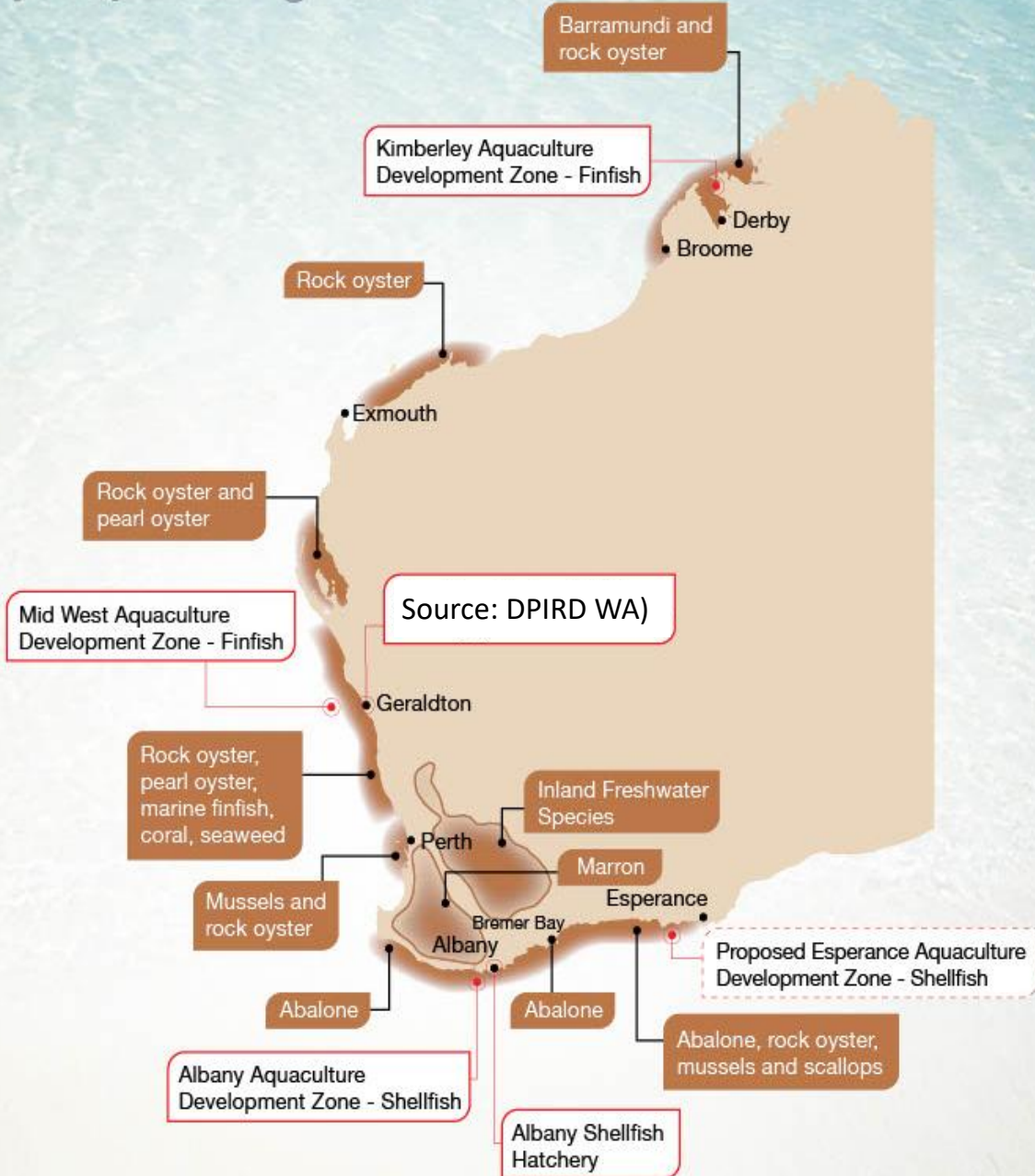
Justin Bellanger CEO

A C W A



AQUACULTURE COUNCIL
OF WESTERN AUSTRALIA

WA aquaculture status and prospective growth



GROWING AREAS

- Albany
- Geraldton
- North of Exmouth
- Broome (and further north)

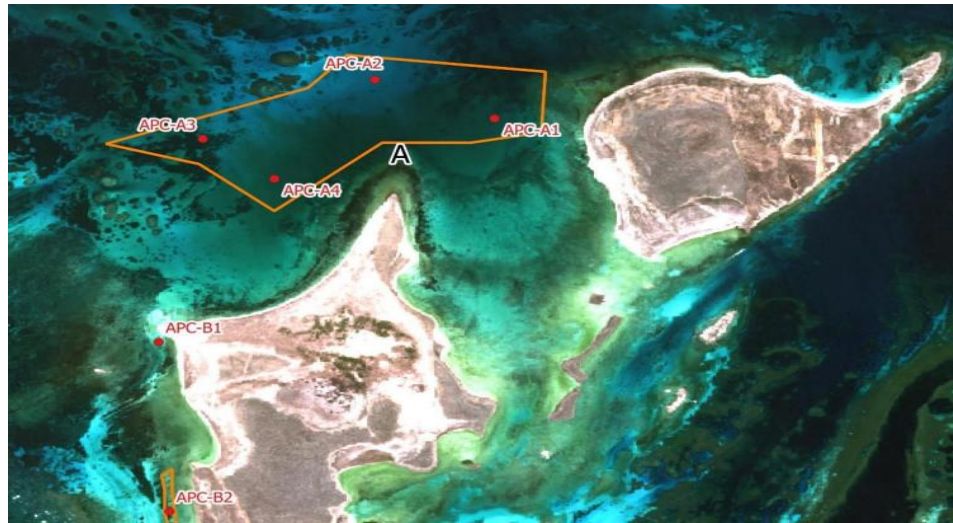


Albany



ALBANY SHELLFISH
HATCHERY

Abrolhos Islands





Kimberley (the north)



Opportunities

- Greenfield sites, brownfield JVs (including w. first-nations) with good entry-point costs.
- Long-term upsides: primary productivity growth; good finishing sites; low closure rates; low disease status; long harvesting condition periods; expansion capacity; local market demand; experiential tourism.



THANK
YOU



AACW



Justin Bellanger

0447928457

ceo@aquaculturecouncilwa.com

AQUACULTURE COUNCIL

OF WESTERN AUSTRALIA